



**Beaufort County Public Works**  
**Stormwater Infrastructure**  
*Project Summary*

Project Summary: Lady's Island Vacuum Truck - Woodbine Drive,  
 Factory Creek Road, Ashley Drive

Project #: 2010-070                      Completed: Oct-09

Narrative Description of Project:  
 Cleaned out (10) catch basins and jetted (1) crossline pipe.

**Material Cost, Rental Equipment Summary, and Labor**

Material	Unit	Cost/Unit	Qty	Cost
Water	gallon	\$0.01	1,950	\$19.50
Diesel	gallon	\$2.37	40.0	\$94.80
Labor	hours		24.5	\$781.83
<b>Total Cost of Materials, Rental Equip., and Labor</b>				\$896.13

Note: Labor cost includes the employee's salary plus fringe benefits.

**Equipment Cost**

Item	Asset	Cost/Hour	Hrs.	Cost
Vacuum Truck	22812	\$20.30	12.0	\$243.60
<b>Total Equipment Cost</b>				\$243.60

Cost/hour excludes fuel cost.

Total Cost:                      \$1,139.73

**Site Photographs**

Before

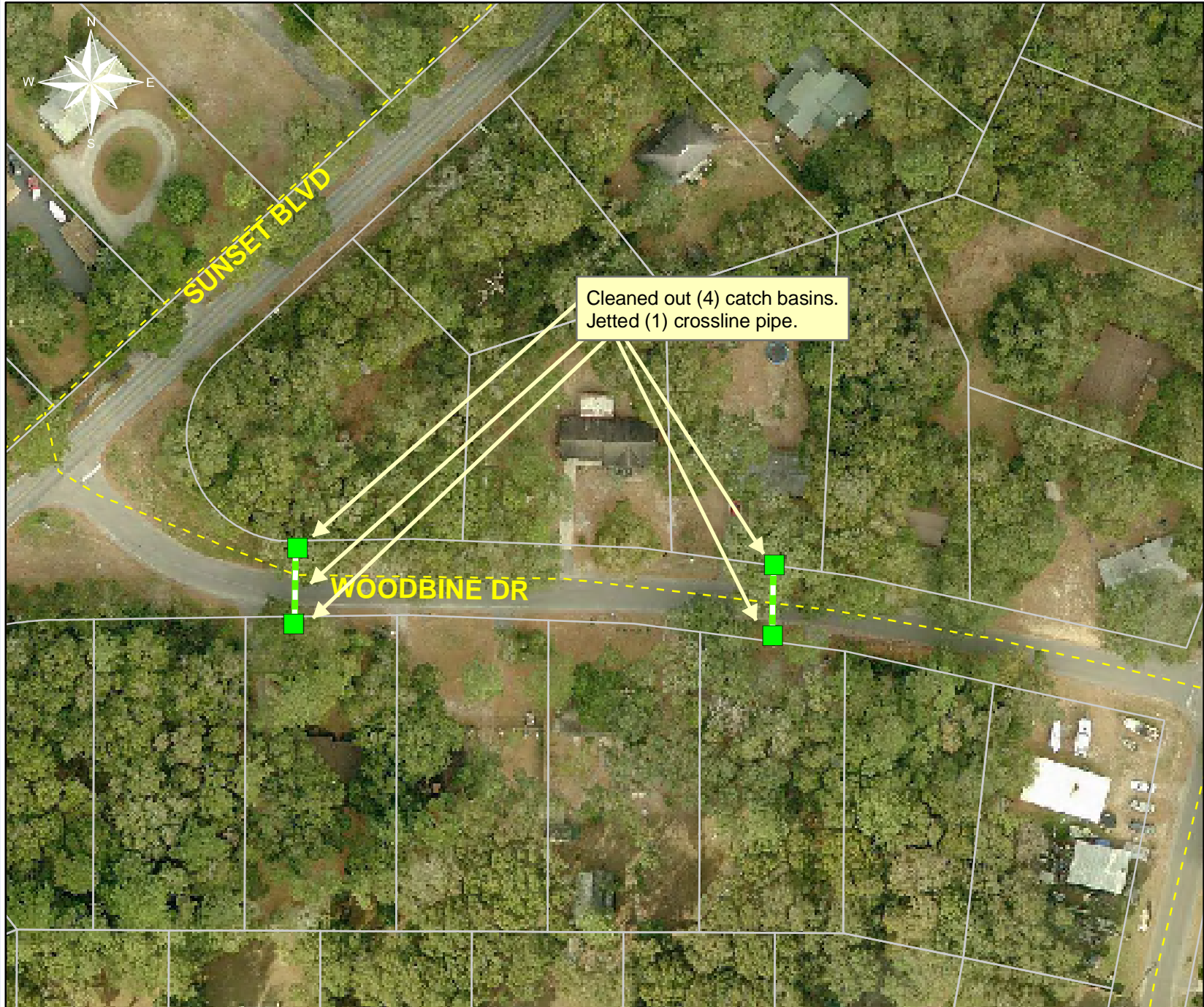


During



After





Project:  
Woodbine Drive

Activity: Vacuum  
Truck

Project #: 2010-070

Township:  
Lady's Island

Completed:  
October 2009

**Legend**

**Drainage Type**

- River
- Stream
- Outfall
- Lateral
- Roadside
- - - Roadside Pipe
- - - Crossline
- D/W
- Access
- Piped
- Bleeder



1 inch equals 92.56 feet

Project: Factory  
Creek Road

Activity: Vacuum  
Truck

Project #: 2010-080

Township:  
Lady's Island

Completed:  
October 2009



1 inch equals 92.56 feet

Prepared By: BC Stormwater Management Utility

Date Print: 2/8/10

File:C:\sethdata\projects\projectmaps\vactruck\Factory Cr Dr 2010-080





Project:  
Ashley Drive

Activity: Vacuum  
Truck

Project #: 2010-108

Township:  
Lady's Island

Completed:  
October 2009

Legend	
<b>Drainage Type</b>	
	River
	Stream
	Outfall
	Lateral
	Roadside
	Roadside Pipe
	Crossline
	D/W
	Access
	Piped
	Bleeder



1 inch equals 92.56 feet